

#2717  
December, 2017  
Page 1 of 6

**SUBJECT:** Allison DOC® V2017.4 Subscription Service Update

**MODELS AFFECTED:** All 1000, 2000, 3000, 4000 Series Product Families, 5000, 6000, 8000, 9000 Series Transmissions, and MT(B) 600, CL(B)T, V, HT(B) 700 Series Transmissions, TC10® Transmissions and H 40/50 EP™ System

**SERIAL NUMBERS AFFECTED:** All

### **Introduction:**

Effective December 2017, the Allison DOC® V2017.4 Subscription Service Update was made available as a “no charge” internet-download for all the Allison DOC® V2017 Subscription Service users. This is a mandatory update and users have 30 days to download and accept this update to continue use of Allison DOC®. This new version incorporates important features and enhancements discussed below.

In order to upgrade the software, V2017.x must already be installed on the PC. Earlier versions of the service tool (e.g. V13.x.x, V14.x.x, etc.) cannot be upgraded to V2017.4, unless V2017.x is first installed. The Allison DOC® product combines Allison DOC® Premium, Allison DOC® Premium (H 40/50 EP™), Allison DOC® Fleets, and Allison DOC® Fleets (FuelSense®). There is one install media but a valid license is necessary to enable each product offering.

Specific enhancements included in V2017.4, as well as downloading and installation procedures, are the main topics addressed in this Service Information Letter (SIL). This SIL is not intended to replace or supersede SILs 45–TR-16 and 10-TR-17 and 17-TR-17, but to complement them as users transition to V2017.4. It is advisable to reference SIL 45-TR-16, 10-TR-17, 17-TR-17 and the Allison Web Store (<https://allisonstore.noregon.com>) for details related to PC platform requirements, V2017.1 ordering information, and other pertinent information.

## Summary of New Features and Enhancements Included in Allison DOC® V2017.4:

### Updates specific to Allison DOC® Premium:

- Adds trimming for FuelSense® 2.0

### Updates specific to Allison DOC® Premium (H 40/50 EP™):

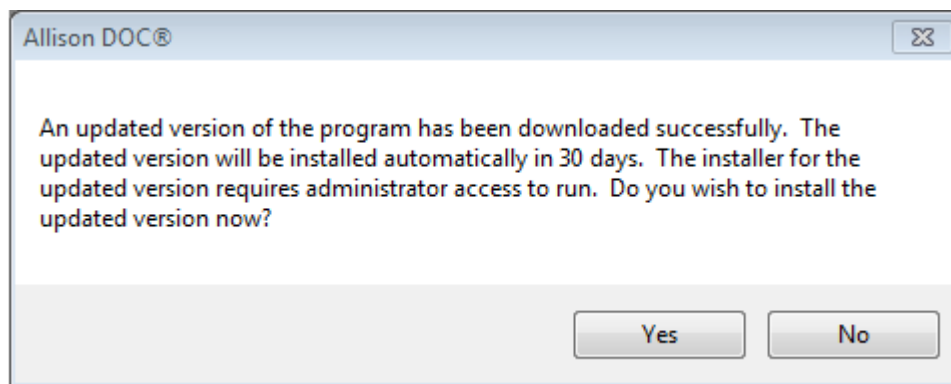
- Adds support for MY18 update
  - Includes 5th Generation Hybrid Gateway Module (HGM) support

### Updates specific to Allison DOC® Fleets (FuelSense®):

- Adds a new product, Allison DOC® Fleets (FuelSense®), which adds trimming for FuelSense® 2.0 in addition to all existing Allison DOC® Fleets features

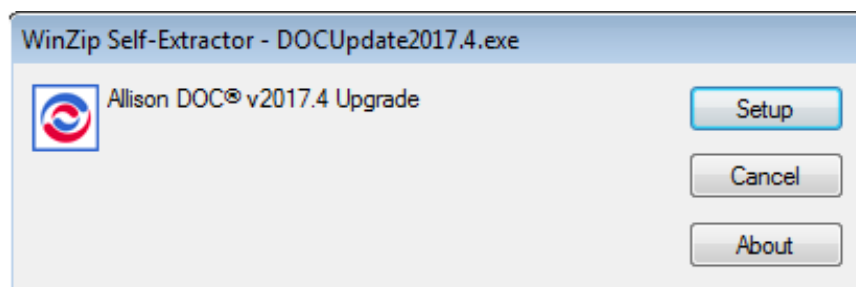
## Download and Installation Procedures:

When Allison DOC® is launched after an update is released, the user will be notified of an updated version. The user will have 30 days to accept the mandatory update. After 30 days, the user must accept the update in order to continue use of the Allison DOC® tool.



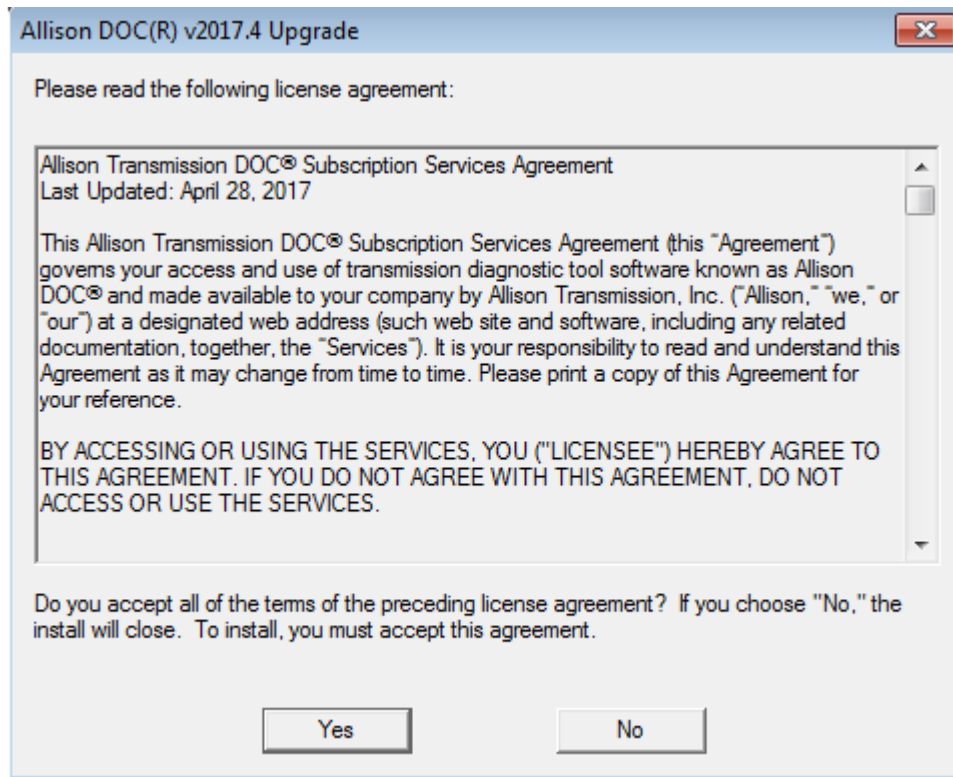
3648008

When the user chooses to accept the update, the WinZip Self-Extractor will run. Select Setup and accept the license agreement, then follow the Setup Wizard prompts to install.



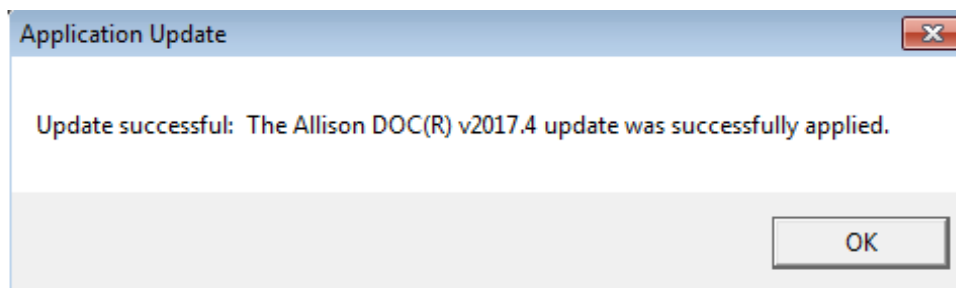
3648028

The user will be prompted to accept the license agreement.



3737936

The user will receive a Success message when the update is complete and applied successfully.



3648048

*There are two additional ways to download and install Allison DOC® V2017.4:*

1. **Update Application feature** – From the Allison DOC® V2017.x main menu, select Software Configuration. Then, select the Update Application tab, click on Check for update button, and follow the instructions on the screen. Depending on the internet communication system, this process may take several minutes.
2. **Update URL** – From the software main menu, select Software Configuration. Then, select the Update Application tab, click on the displayed URL (i.e. <https://allison.noregon.com/userservices/subscriptionupdate.htm>). Once the Update website is displayed, click on Download Update for V2017.4, and select Save option. Select the Desktop from the "Save in:" pull-down menu, or any other easy-to-access location on the PC, and save the *DOCUpdate1740.exe* file. Once the file is successfully downloaded, close the Allison DOC® software, then double-click on the *DOCUpdate1740.exe* file and follow the instructions on the screen.

Copyright © 2017 Allison Transmission, Inc. All Rights Reserved.

**Activation:**

When Allison DOC® is installed, the user will activate by entering the subscription license. There is a new field for Allison DOC® Fleets (FuelSense®) on the Activation Notice:

The screenshot shows a window titled "Activation Notice" with the following content:

**This application must be activated. Use the license key received when the product was purchased. The license key was e-mailed for downloaded purchases. For all other purchases, the license key was included with the packaging.**

**Customer Information:**

- First Name (red text)
- Last Name (red text)
- Company
- Address (red text)
- City (red text)
- State/Province (red text)
- ZIP/Postal Code (red text)
- Country
- Phone

**Install Image Information:**

- Version: 2017.4
- Serial Number: 0

**PC Information:**

- PC Name: USCTNR9N2W4K
- IP Address: 10.1.244.86
- PC Serial: R9N2W4K

**Subscription Licenses:**

- Allison DOC® Premium
- Allison DOC® Fleets
- Allison DOC® Fleets (FuelSense®)
- Allison DOC® Premium (H 40/50 EP™)

**Reprogramming:**

- E-Learn ID: bzyyr
- E-Learn Password

**Buttons:** Reset, License Info History, Internet Connection, Exit, Activate Subscription

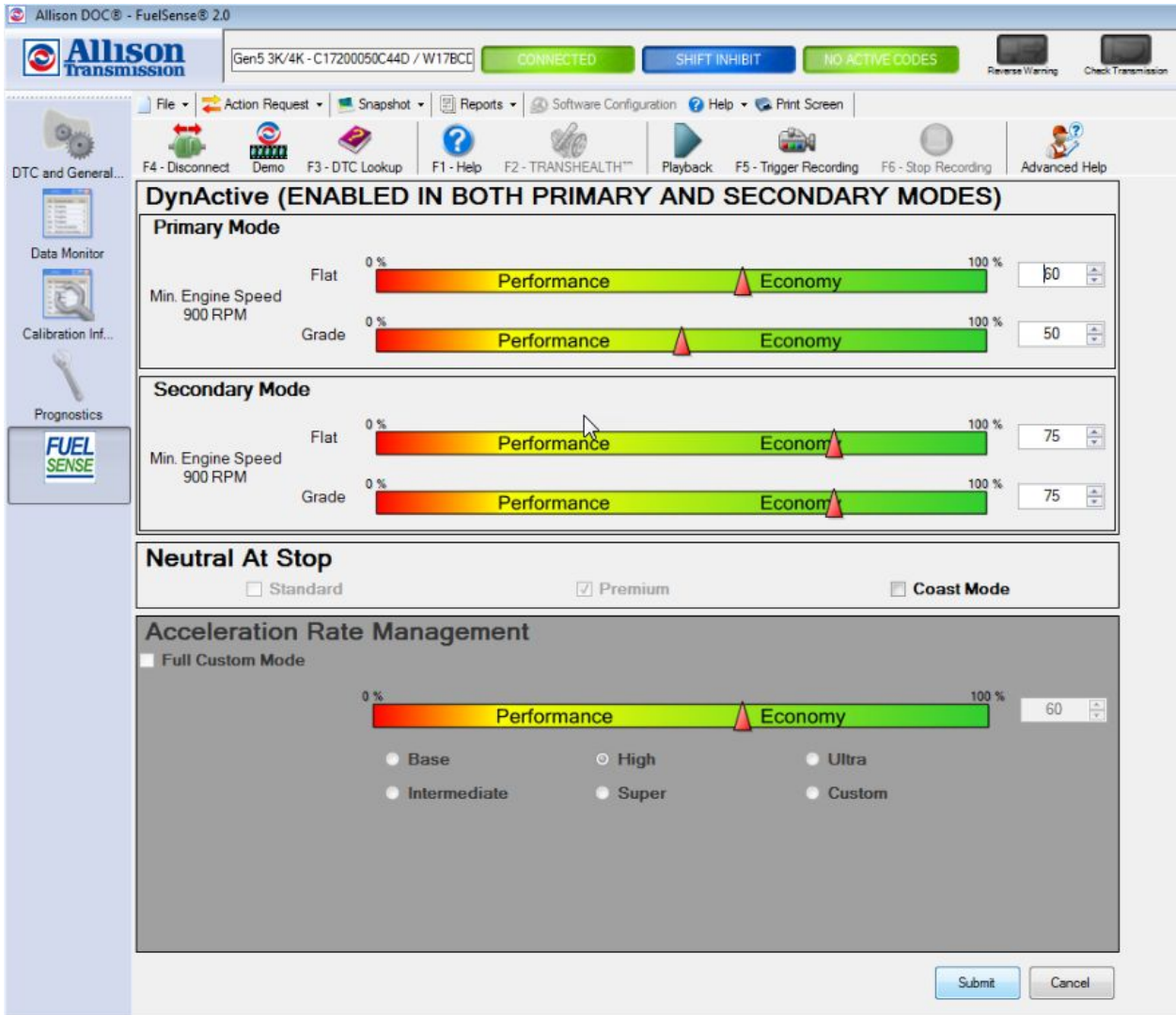
**Fields with red text are mandatory**

4045697

**Figure 1.**

**FuelSense® Enabled:**

When FuelSense® 2.0 is enabled in the calibration, the FuelSense icon will appear and the user will be able to access the FuelSense® tab and trim settings. After trimming, select the Submit button to reprogram the TCM:



4045857

**Figure 2.**

**FuelSense® CMC grid:**

The new FuelSense® Group is located in the Customer Modifiable Constant (CMC) grid on the Calibration Information page:

Customer Modifiable Constant	Value
PRESELECT REQUEST CB2 INPUT	GPI CB2 IF DEFINED IN SELEC...
PRESELECT REQUEST CB2 INPUT: Request Range for Primary Mode	3rd Range
PRESELECT REQUEST CB2 INPUT: Request Range for Secondary Mode	3rd Range
PRESELECT REQUEST CB2 INPUT: Response to Preselect Request	Low accelerator positions ...
ENGINE BRAKE: Automatic Preselect Optimization	None
CRUISE CONTROL: Automatic Preselect Optimization	None
CRUISE CONTROL: Custom Preselect Optimization Threshold (KPH)	8
<b>Group: Grade Braking</b>	
GRADE BRAKING / REGENERATION INPUT	Disabled
GRADE BRAKING: Automatic Preselect Optimization	MODERATE
<b>Group: Prognostics</b>	
PROGNOSTICS	Defaulted On
PROGNOSTICS: Transmission Fluid Type	TRANSYND / TES 295 FLUID
PROGNOSTICS: Allow Enable / Disable via Shift Selector Sequence	Yes
PROGNOSTICS: Allow Reset via Shift Selector Mode Button	Yes
PROGNOSTICS: Allow Reset via Shift Selector Sequence	Yes
PROGNOSTICS: Allow Reset via J1939 Command	Yes
PROGNOSTICS: Transmission Oil Life Remaining Offset	100 %
<b>Group: Dynamic Shift Sensing</b>	
DYNAMIC SHIFT SENSING	Enabled
DYNAMIC SHIFT SENSING: Availability of Lower Shift Speed Schedule	HIGH
DYNAMIC SHIFT SENSING: Lower Shift Speed Schedule Shift Schedule Designation	Secondary Mode
DYNAMIC SHIFT SENSING: Lower Shift Speed Schedule Override Time	30 SECONDS
DYNAMIC SHIFT SENSING: Custom Breakpoint Setting (kg)	44092.46 lbs
<b>Group: FuelSense®</b>	
FuelSense	FuelSense 2.0 Plus
DynActive Shifting	ENABLED IN BOTH PRIMARY ...
PRIMARY MODE: DynActive: Flat Ground Economy Bias	60
PRIMARY MODE: DynActive: Grade Economy Bias	100
PRIMARY MODE: DynActive: Minimum Engine Speed Operation	900 rpm
SECONDARY MODE: DynActive: Flat Ground Economy Bias	10
SECONDARY MODE: DynActive: Grade Economy Bias	75
SECONDARY MODE: DynActive: Minimum Engine Speed Operation	900 rpm
NEUTRAL AT STOP	PREMIUM - VIA GPI AS IF DE...
FuelSense 2.0: Coasting NEUTRAL AT STOP	Enabled
ACCELERATION RATE MANAGEMENT	Disabled
ACCELERATION RATE MANAGEMENT: Custom Low Speed Breakpoint (KPH)	10.80
ACCELERATION RATE MANAGEMENT: Custom High Speed Breakpoint (KPH)	39.60
ACCELERATION RATE MANAGEMENT: Custom Low Speed Acceleration Limit (m/s <sup>2</sup> )	1.70
ACCELERATION RATE MANAGEMENT: Custom High Speed Acceleration Limit (m/s <sup>2</sup> )	0.75

Figure 3.